

Leadingtouch driver user manual

Content

1	-----	About
2	-----	Technical Support
3	-----	Driver installation
4	-----	Driver setting
5	-----	Uninstall driver

1 About

Congratulations on your purchase of a Leadingtouch touch product. Touchscreen is the most intuitionistic input device of your computer. Just touch what you see, computer will act as you thought. Actions between people and computer become simple, direct and natural, really a perfect combination.

About

The manual tells how to install Leadingtouch full series touch product driver, any question please go to www.leadingtouch.com to down load the latest driver program, or contact with your supplier.

Technical Support

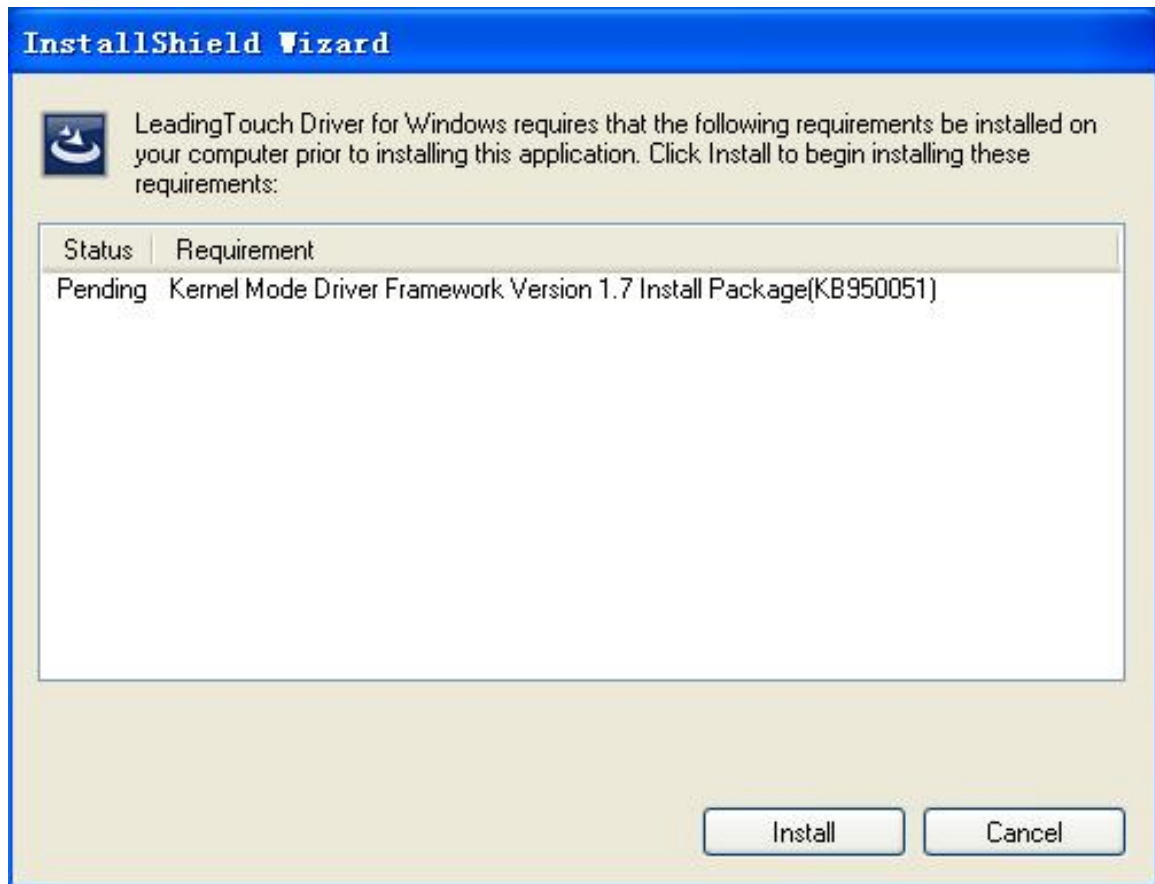
If there is any technical questions, please contact your supplier, phone Leadingtoch technical support center or go to website www.leadingtouch.com for more help information.

Before that, please prepare following information:

- ☐ Series code in label on touchscreen or controller card.
- ☐ Your computer model;
- ☐ Your operation system name and core version
- ☐ Software name and version in use;
- ☐ Hardware name and version in use;
- ☐ List of your computer external equipments;

Leadingtouch hold the final explanation right for this manual.

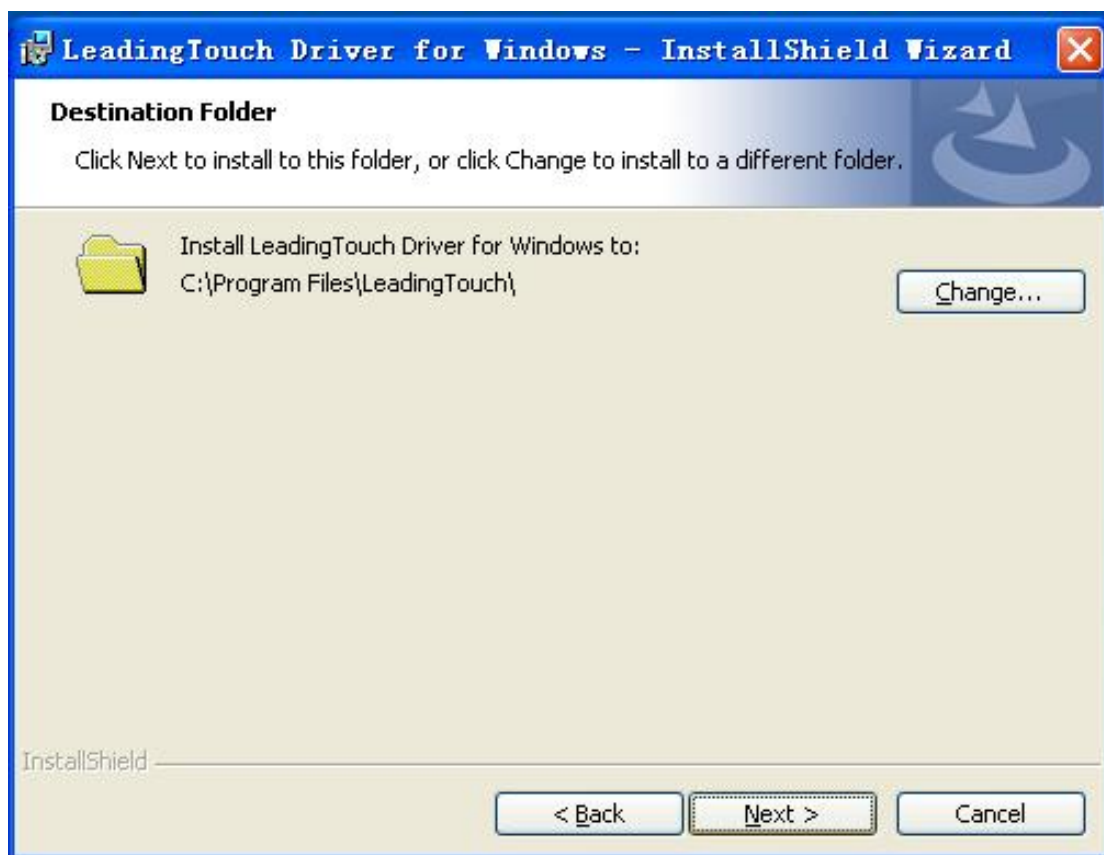
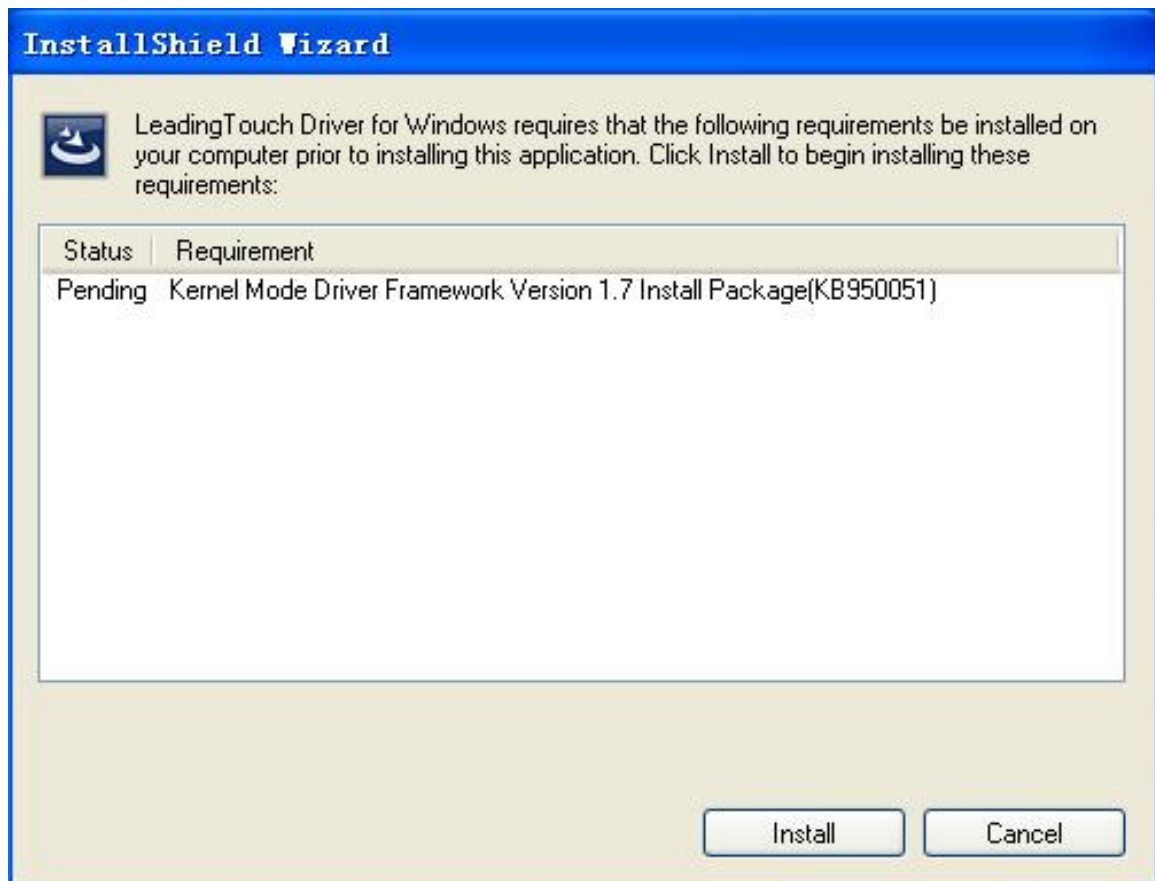
2 Driver installation



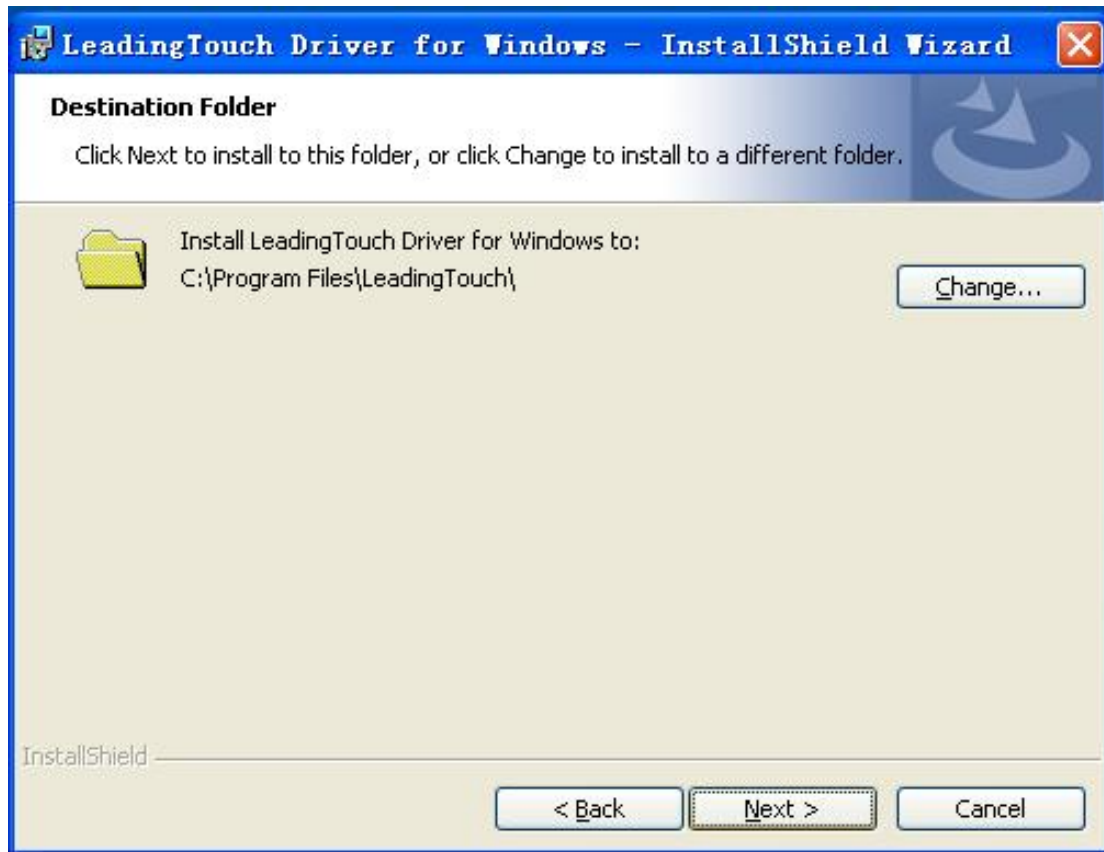
Start installation

Double click setup.exe file to start installation.

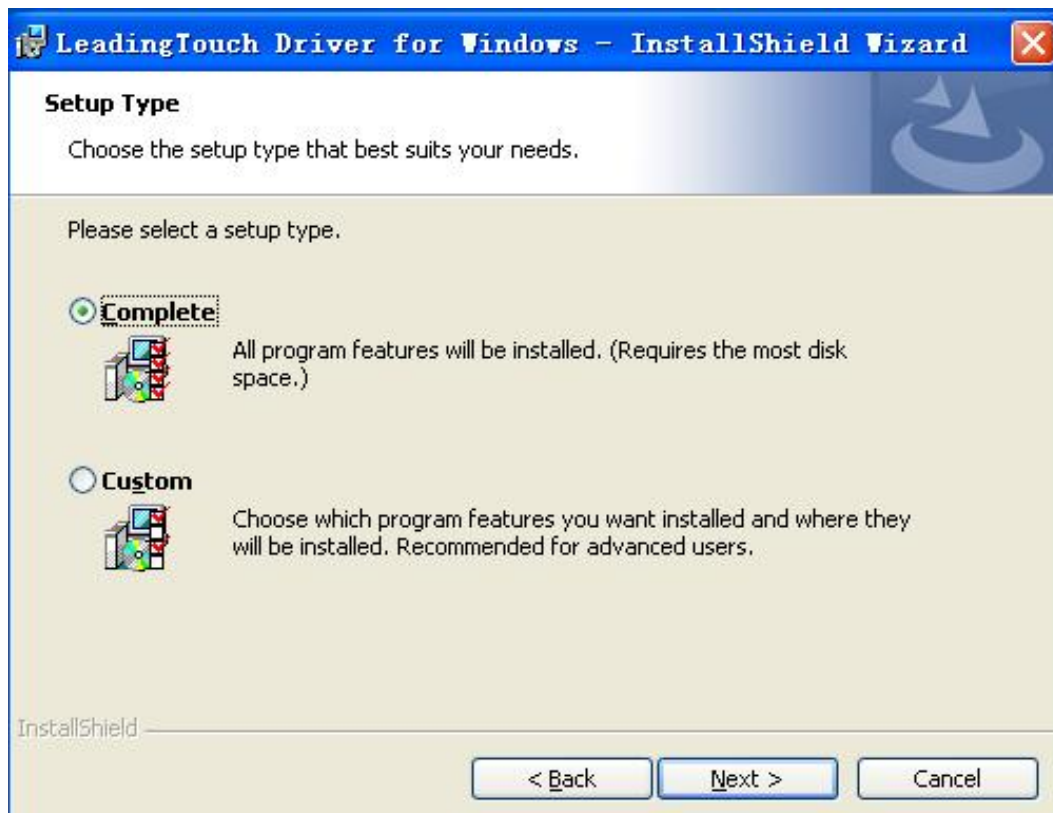
Firstly install resource kit for driver



Choose a installation path, the default path is C:\Program files\Leadingtouch.



There are two setup type: complete and Custom. The default one is complete type.



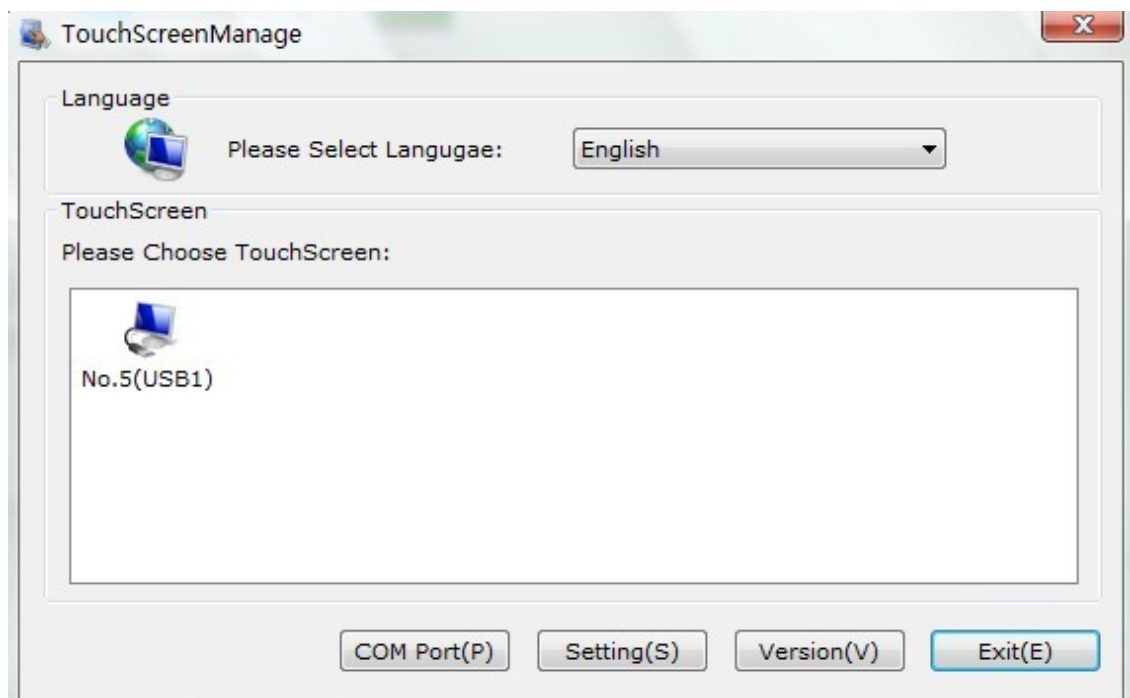
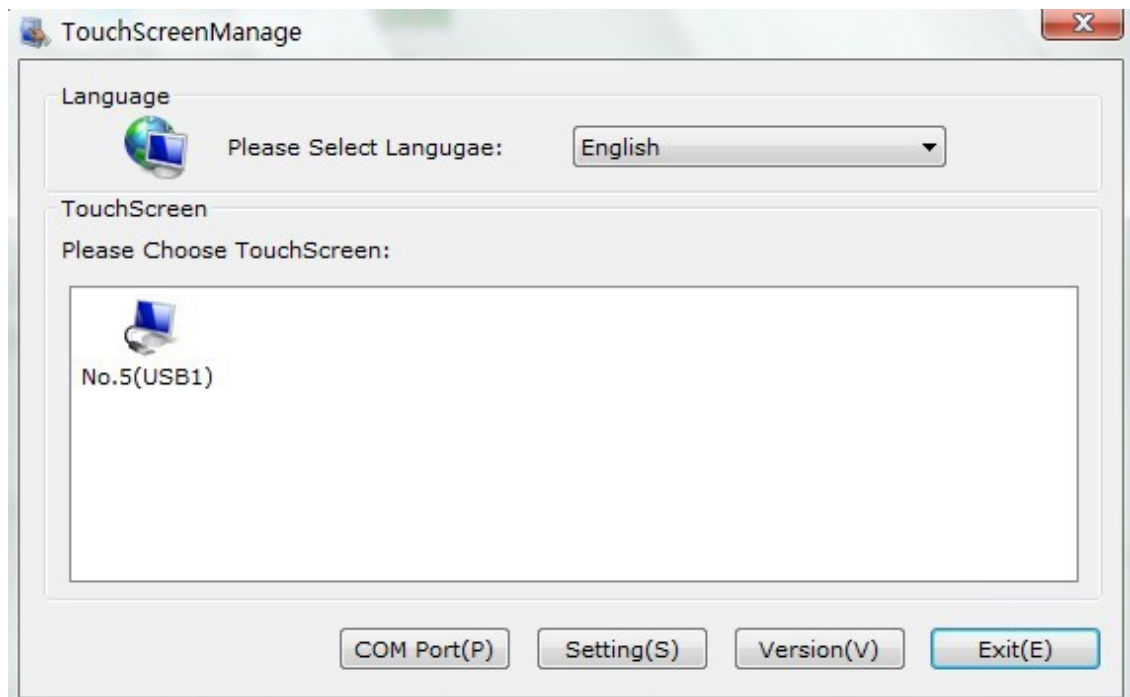


After installation, double click LeadingTouchSetup on desktop to enter calibration program.



3 Introduction to driver setup and function

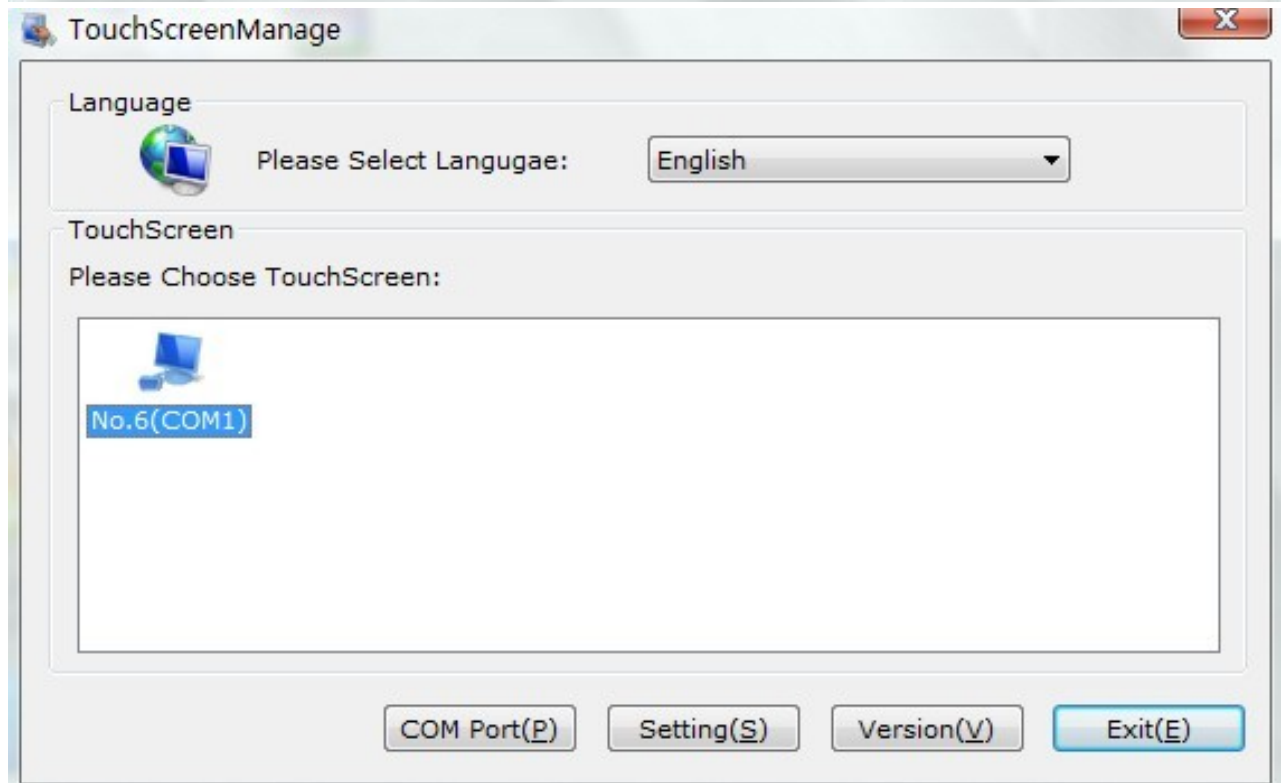
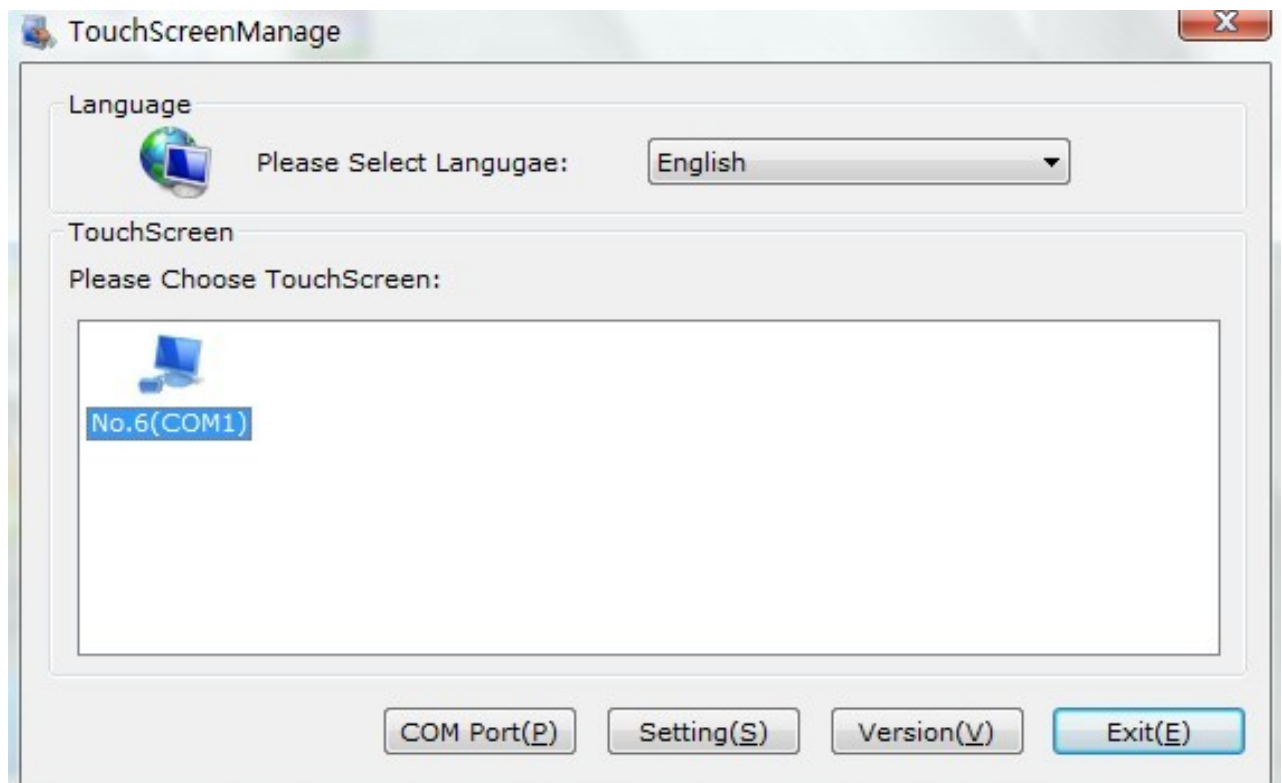
3.1 Touchscreen administration interface



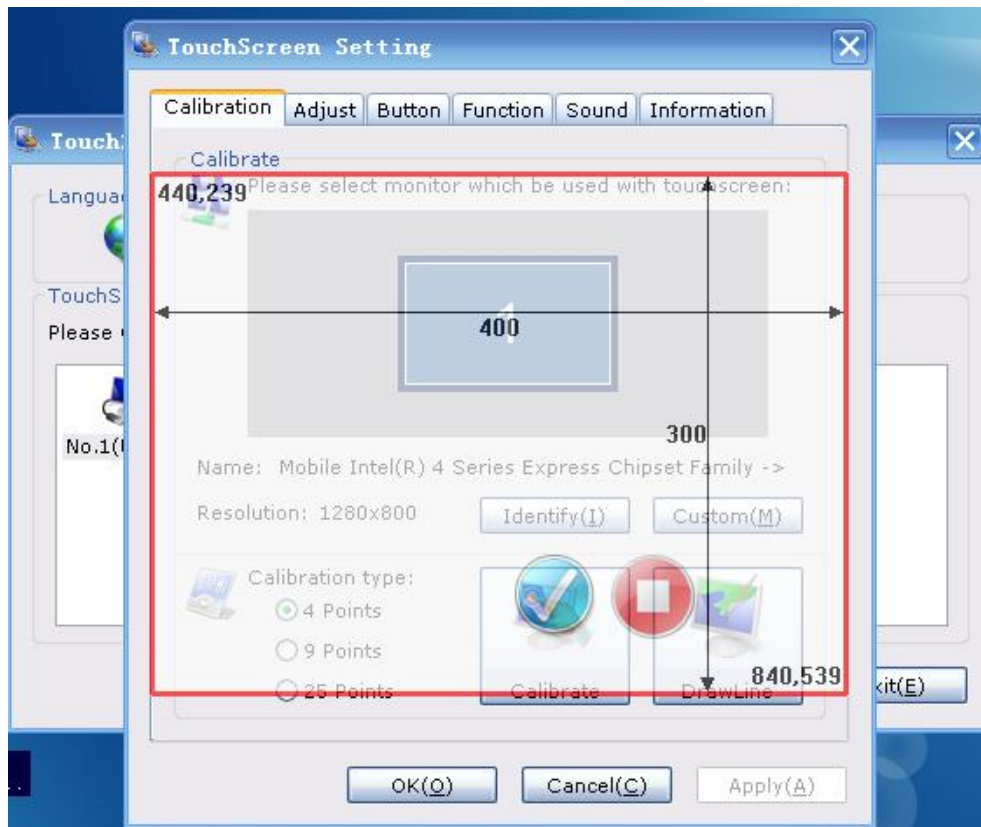
Language: can choose interface language, now has two choice Chinese and English language.

Touchscreen: All touchscreen can be recognized is shown in the box, choose the right one calibrate and click Setting(S) to continue your setting.

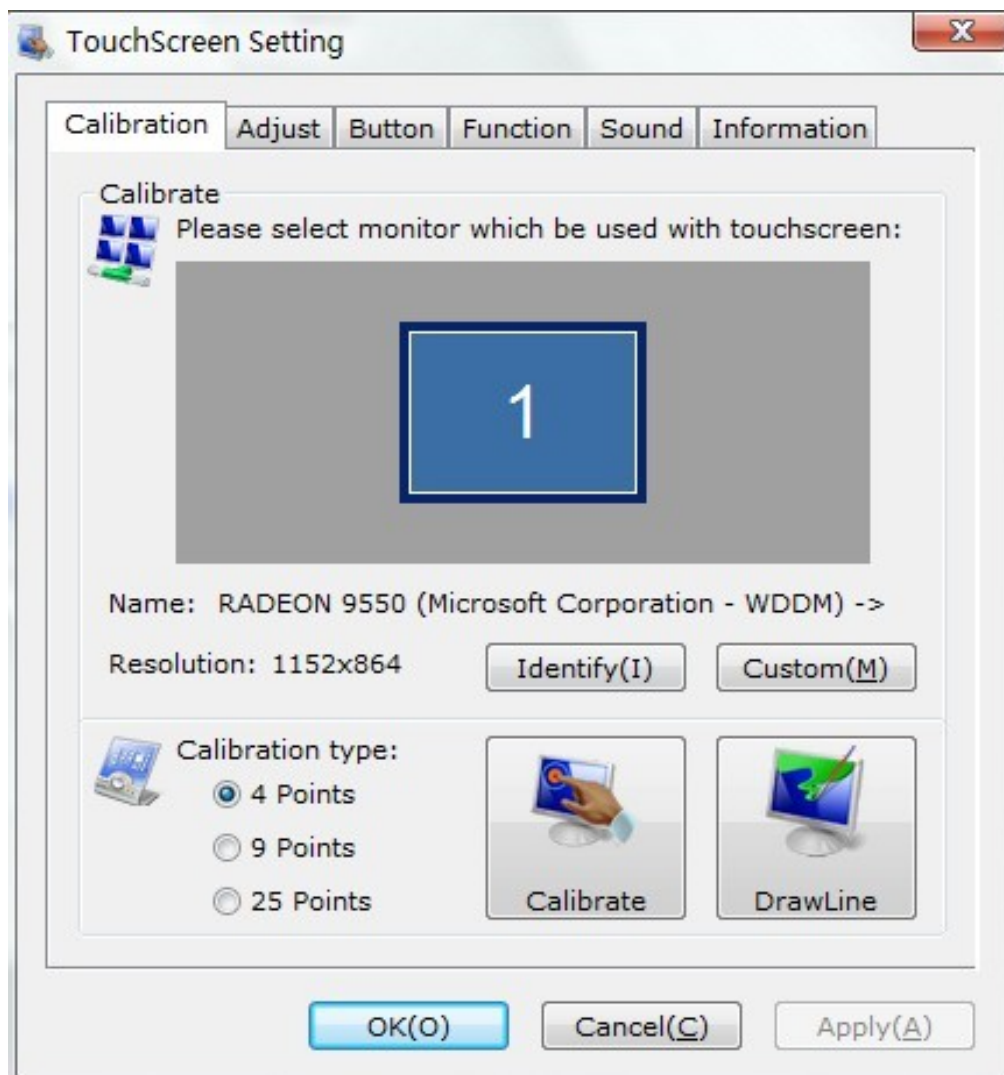
COM Port(P): For serial interface touchscreen, please select the right COM port for your touchscreen to continue setting(Note: COM interface touchscreen can't not be recognized autoly, user need to select COM port manually and click Add to add touchscreen into computer as following picture shows).

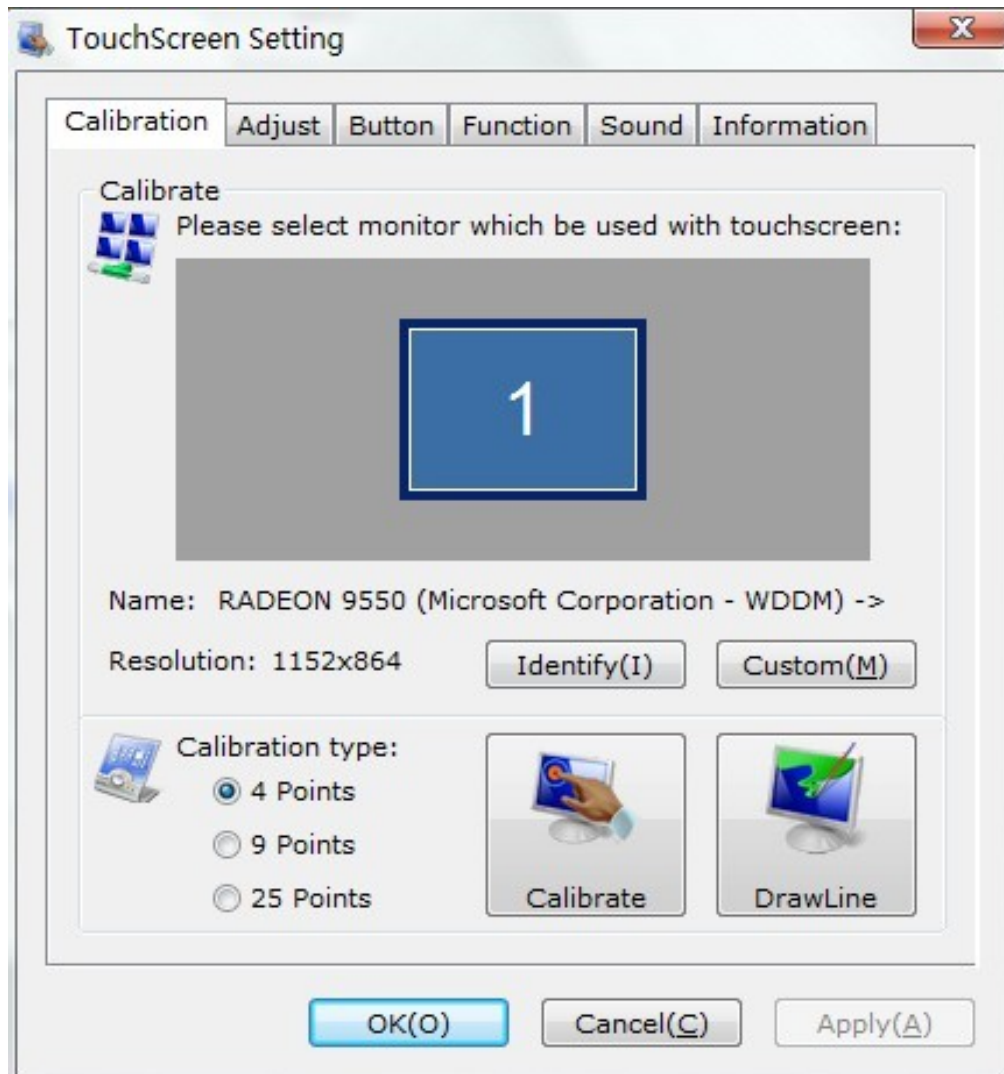


Driver version information



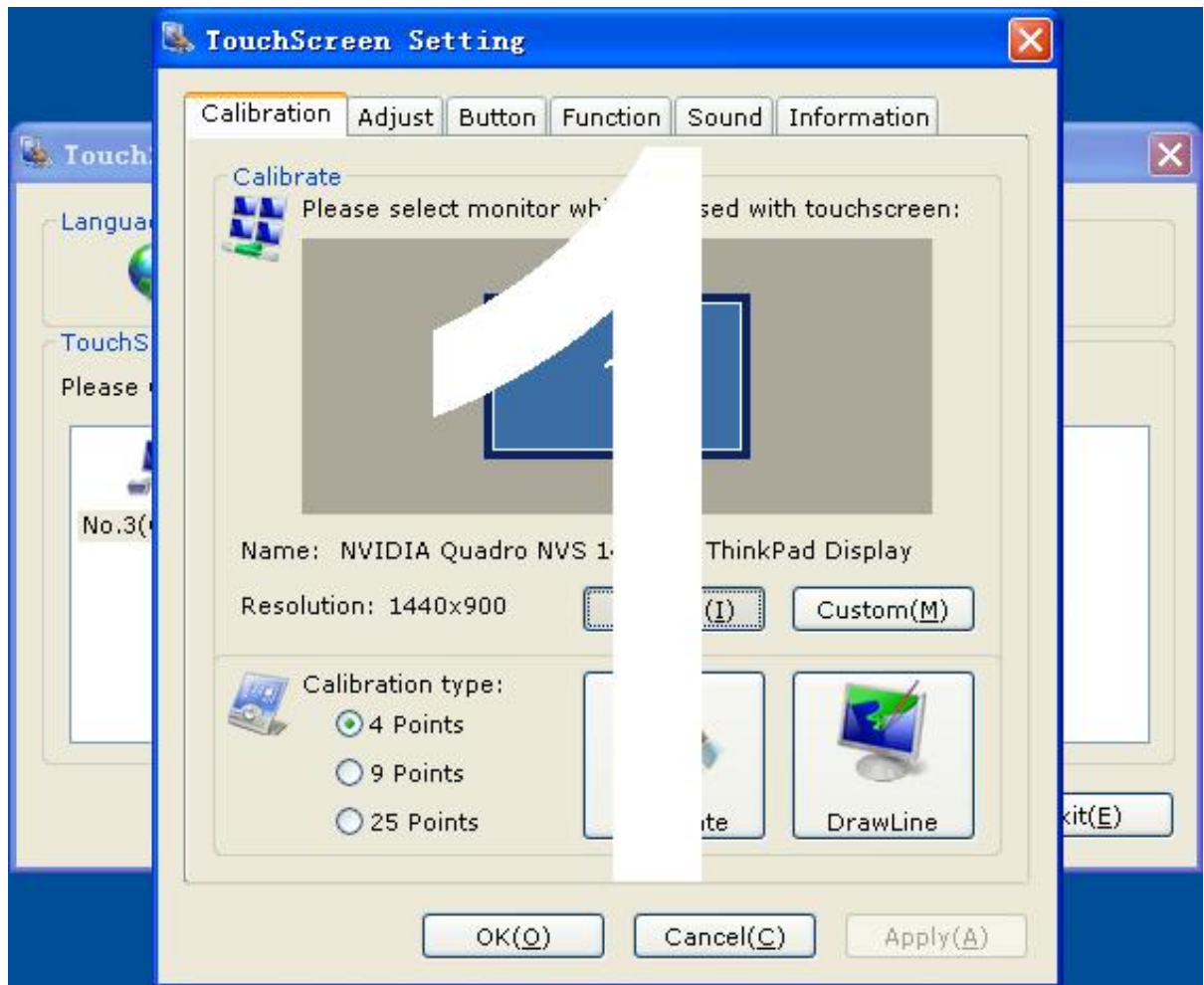
2.2 Touchscreen setting

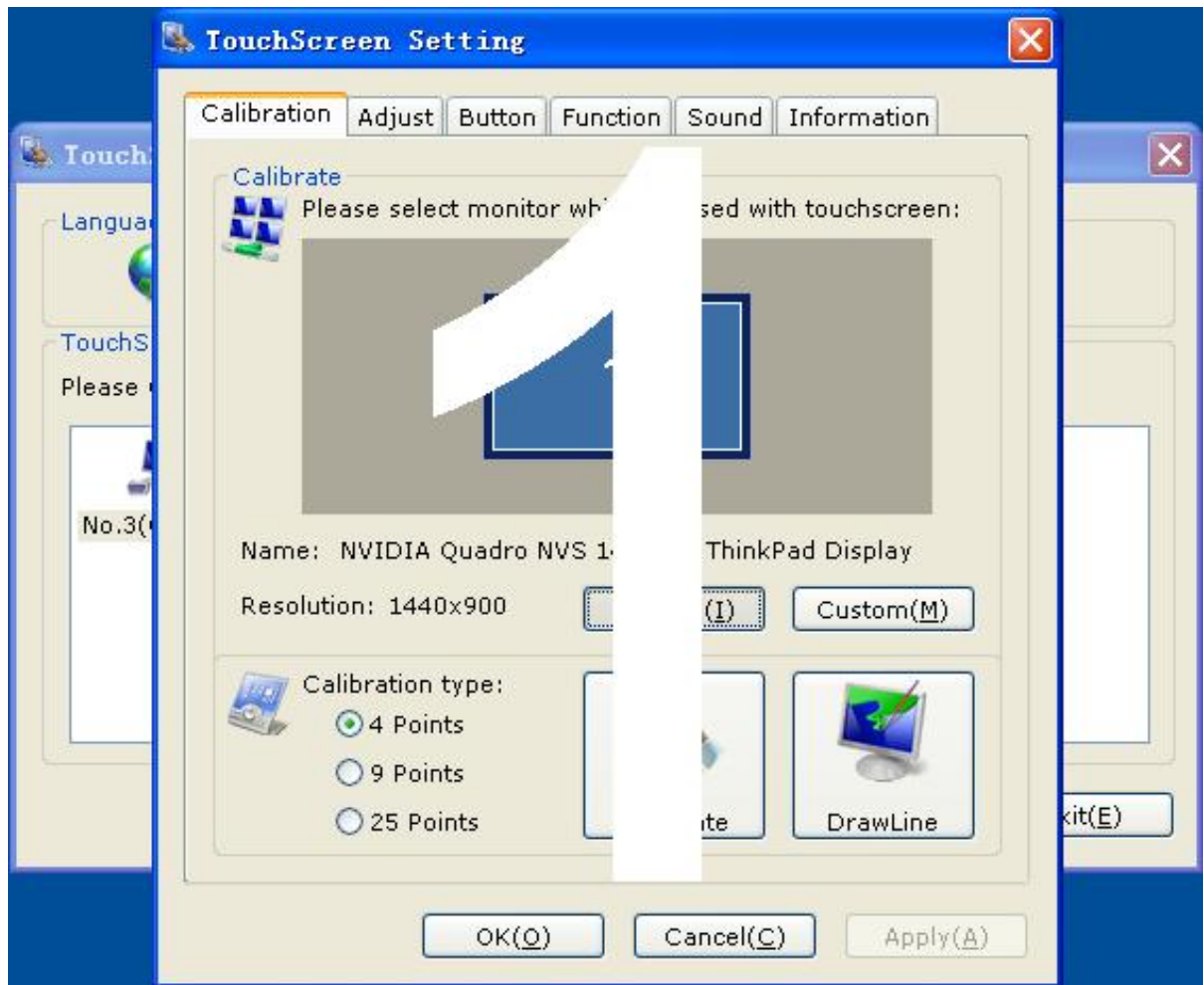




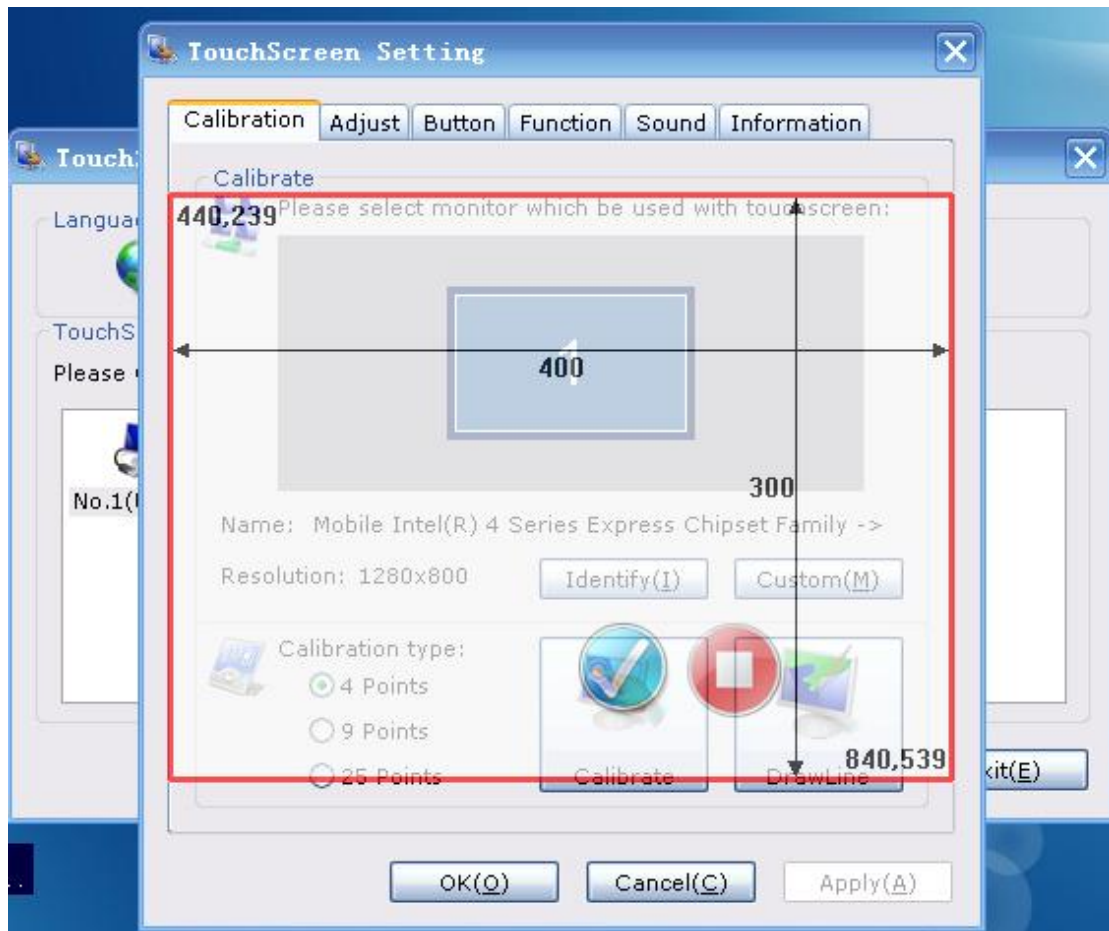
Calibrate: show monitor and resolution information recognized by system

Identify: show monitor information to current touchscreen.





Custom: to define custom calibration area by changing drag Left-Top and Right-Bottom coordinate to set calibration area.



4 points calibration: calibrate by 4 points, for SAW and Infrared touchscreens.

9 points calibration: calibrate by 9 points, for 4W, 5W and capacitive touchscreen.

25 points calibration: calibrate by 25 points, for 4W, 5W and capacitive touchscreen.

Select 4 points, 9 points, 25 points or custom and click calibrate to start calibration.



**Beging calibrate,please touch and hold the target until you listen second beep sound.
Or press ESC key,to terminate calibration.**



**Beging calibrate,please touch and hold the target until you listen second beep sound.
Or press ESC key,to terminate calibration.**

Press the center of red point for about 2-3 seconds. Don' t release your finger until the red point shaft to next position or hearing beep sound. Repeat for all red point to finish calibration.

Calibration succeed,please touch screen to check result of calibration.
Press <Esc> to exit,<Space> to calibarte again,<Entry> to Draw Line Test.

ReCalibrate[Space]

DrawLine[Entry]

Exit[Esc]

After calibration, you can choose:

Recalibrate: If mouse cursor can't overlap with your touch finger, please select this item to calibrate touchscreen again.

DrawLine: Select to enter draw-line test, for more details refer to next chapter

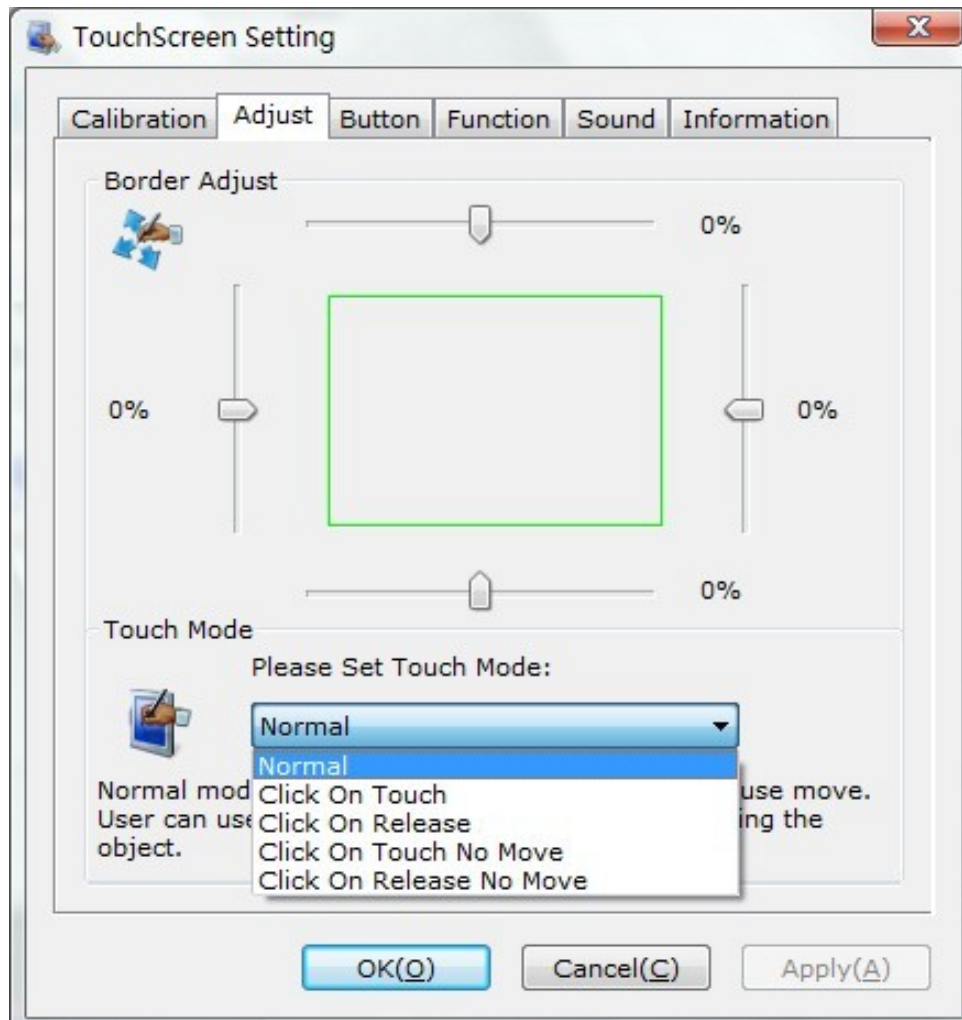
Clear[Space]

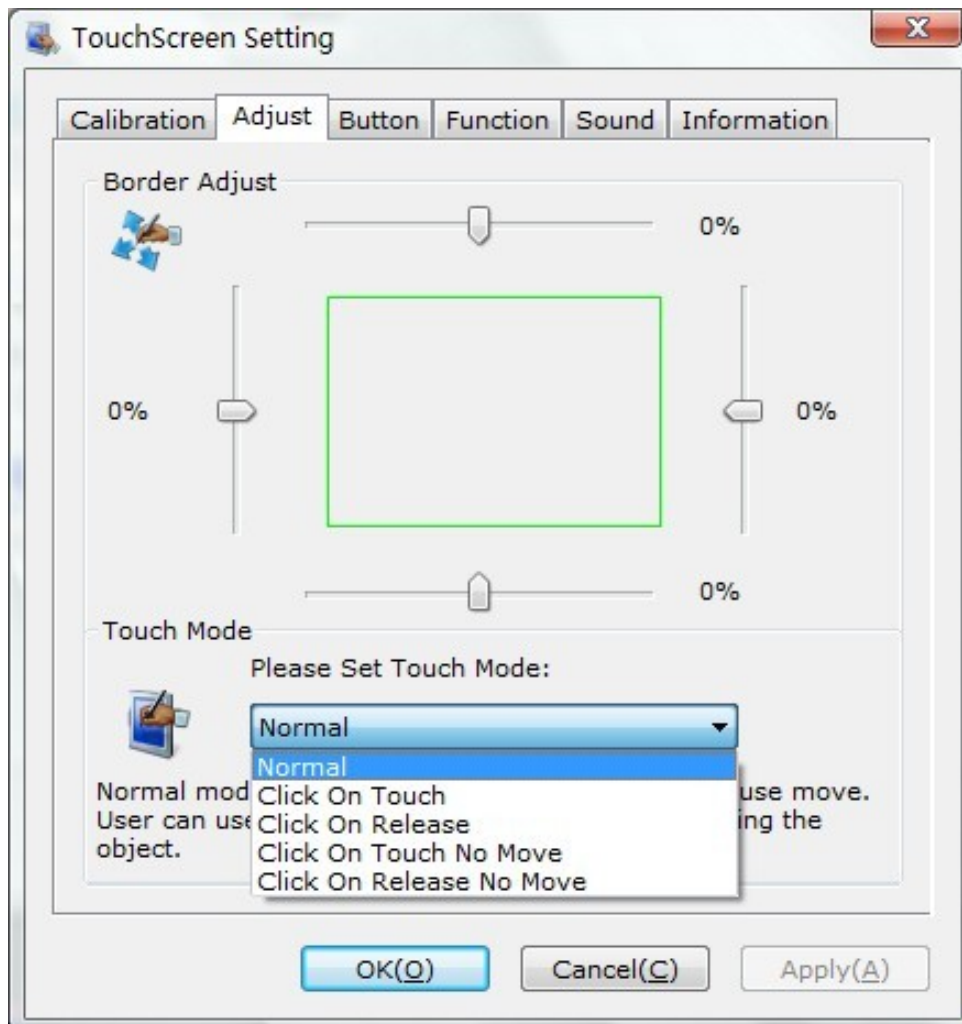
Exit[Esc]

Multi-touch Function

Touchscreen that support multi-touch can test multi-touch function after calibration. Touch screen by two fingers at different point synchronously, red and blue lines in screen and indicate the current touchscreen can support multi-touch.

2.3 Touchscreen setting- Adjust





Border adjust: adjust screen border scale border to fit current touchscreen, as touchscreen may have abnormal action caused by installation or non-linear problem.

Touch mode:

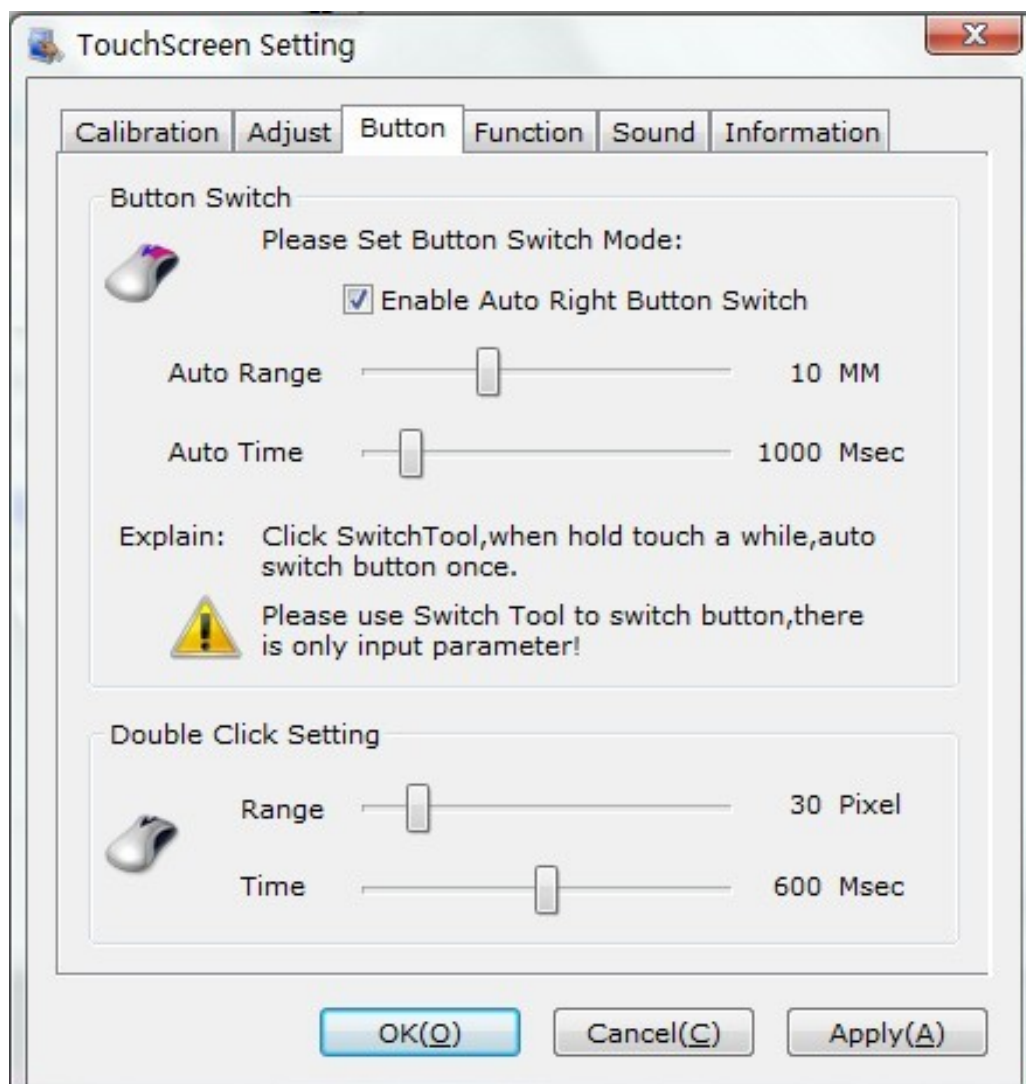
Click On Touch: indicates the response when your finger touches on the panel

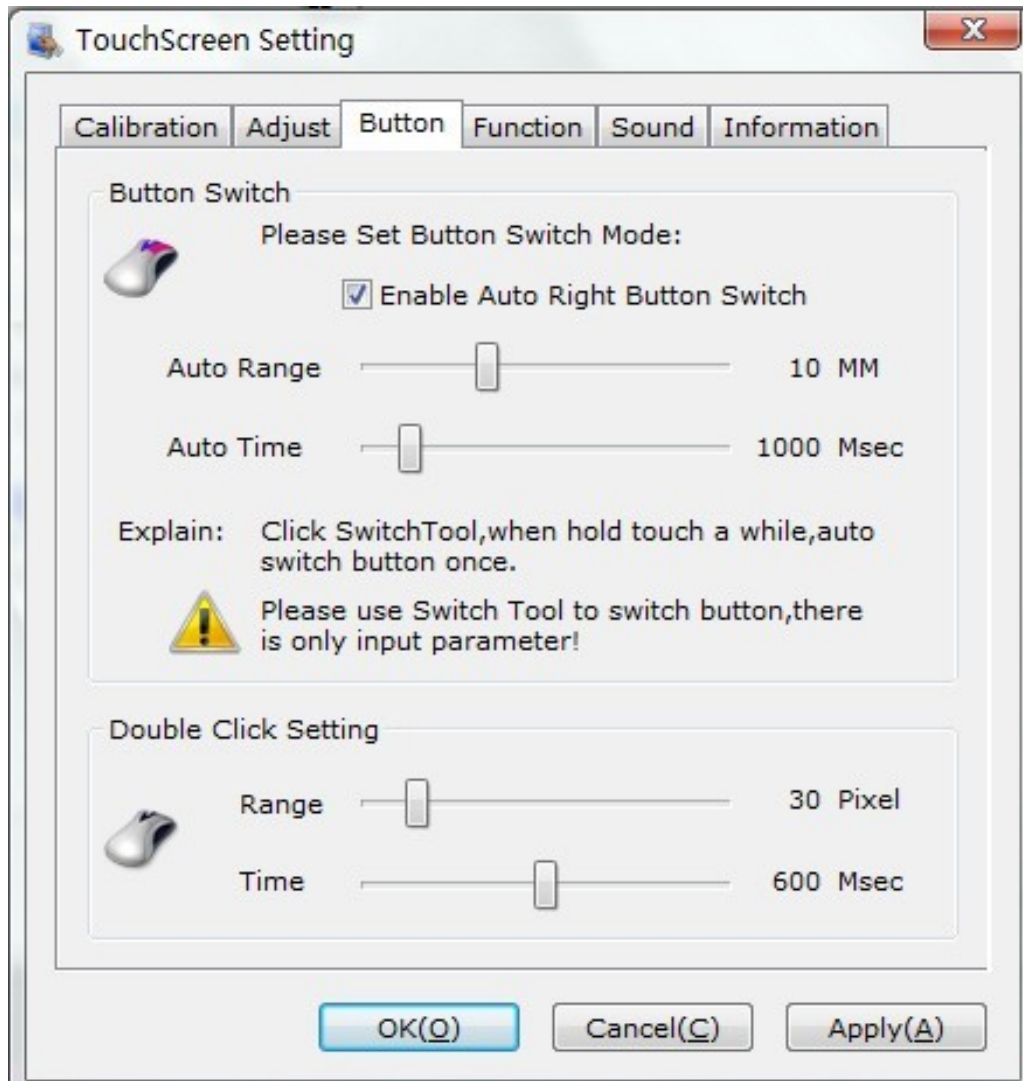
Click On Release: indicates the response when your finger leaves the touchs panel

Click On Touch No Move: indicates the response when your finger touches on the panel, can't draw line and drag

Click On Release No Move: indicates the response when your finger leaves the panel, can't draw line and drag

2.4 Touchscreen setting-Button





[Button Switch]: Enable Auto Right Button Switch

Auto range: Click effectual in 10mm area

Auto time: Click effectual in 1000mMsec

Auto right button effects only when above two items effectual.

[Double Click Setting]:

Range: Clicks in range of 10 mm are determined to be a touch point


Time: Clicks in 500 msec are determined to be a touch point

If any icon or program can't open normally, please drag the two rules above to right side a little.

2.5 Touchscreen setting-Advanced

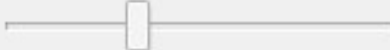
TouchScreen Setting

Calibration Adjust Button **Function** Sound Information

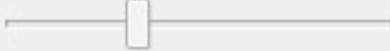
 ☒ Enable Touch

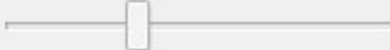
Advanced Function

☐ Enable Const Touch Function

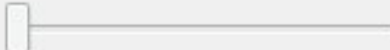
Range  10 MM


☐ Enable Line Continue Function

Range  20 MM

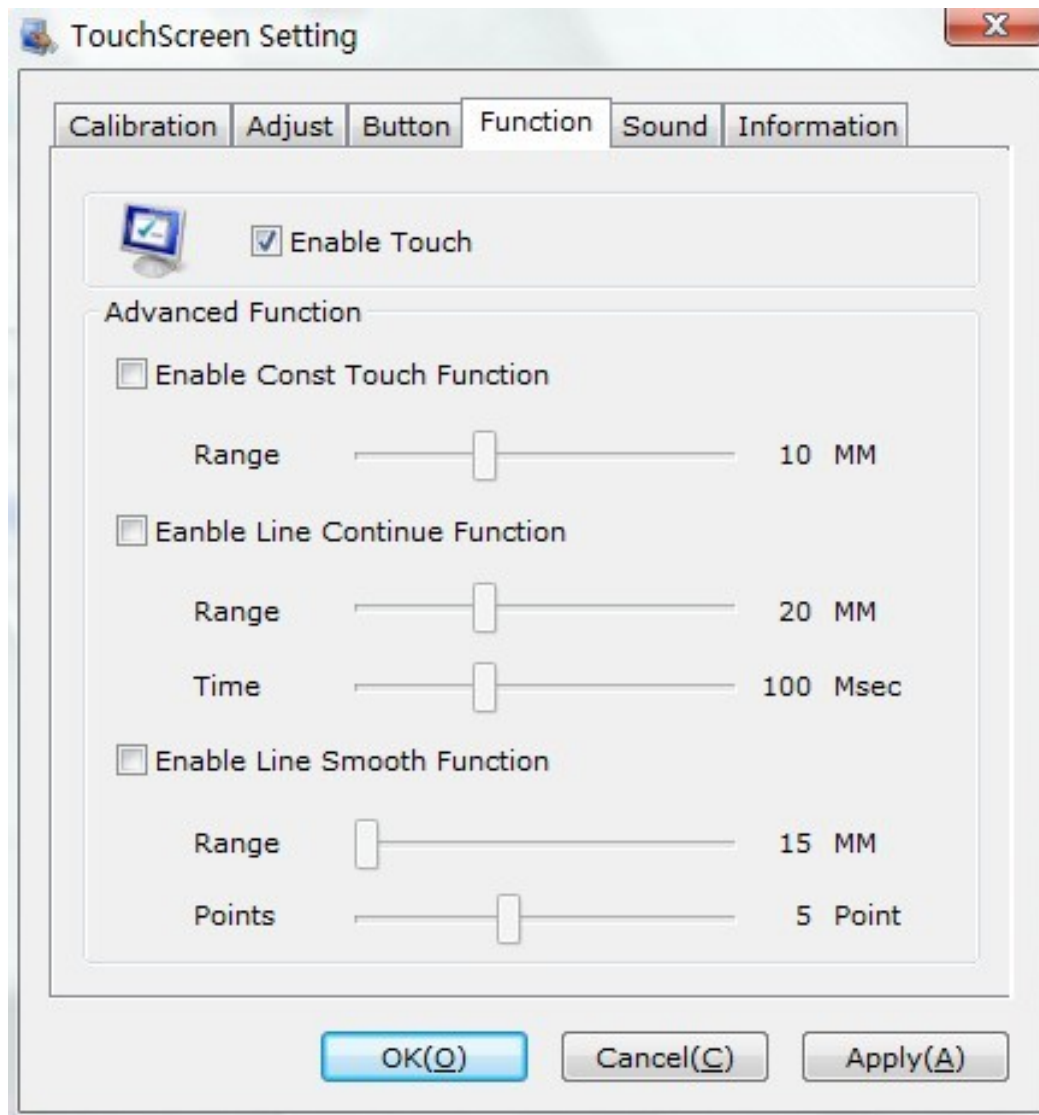
Time  100 Msec

☐ Enable Line Smooth Function

Range  15 MM

Points  5 Point

OK(O) Cancel(C) Apply(A)



[Enable Touch]: Enable or disable touch function of touch panel

[Advanced Function]:

Enable Const Touch Function: The range of 10 mm are determined to be a touch point

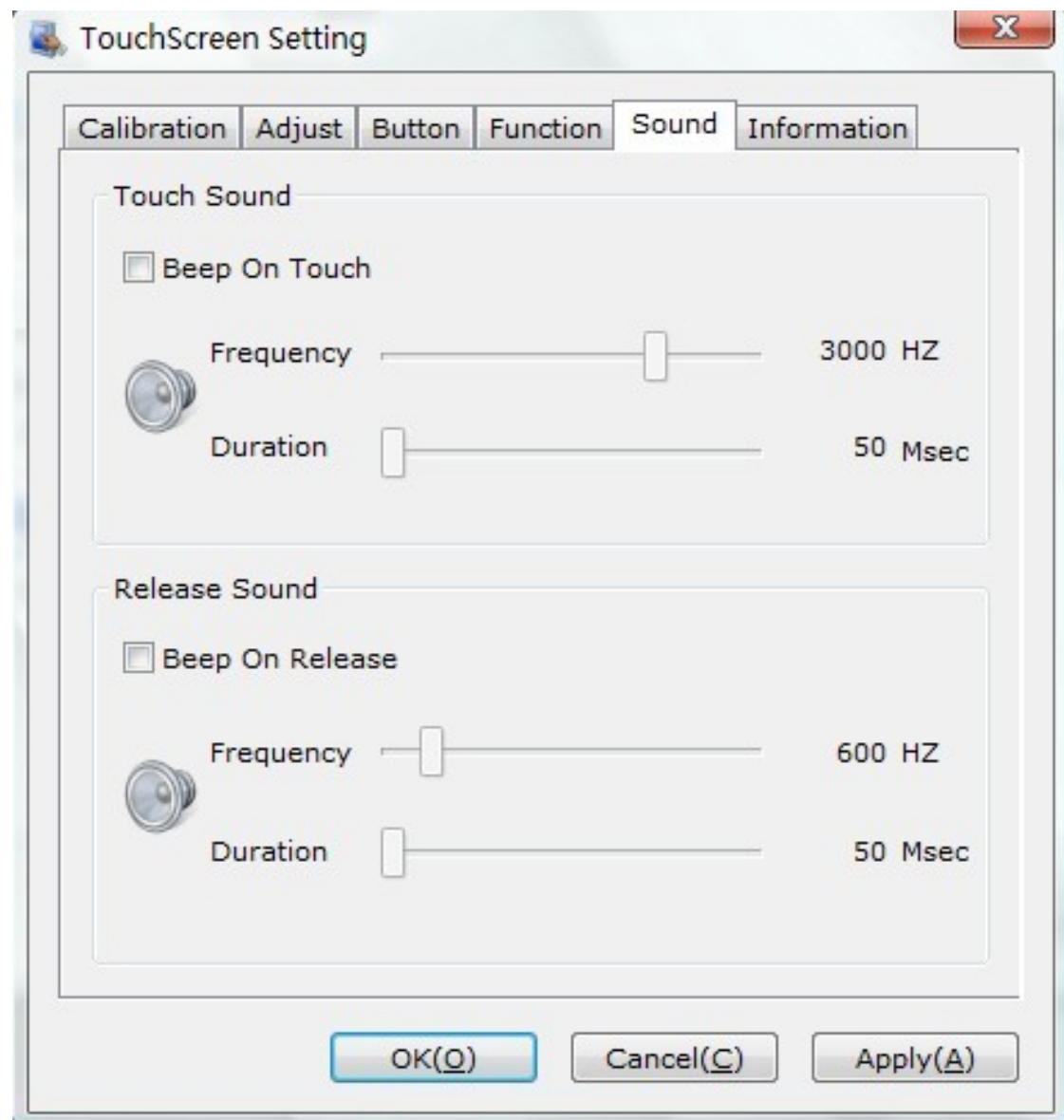
Enable Line Continue Function: Settings for handwriting input or drawing.

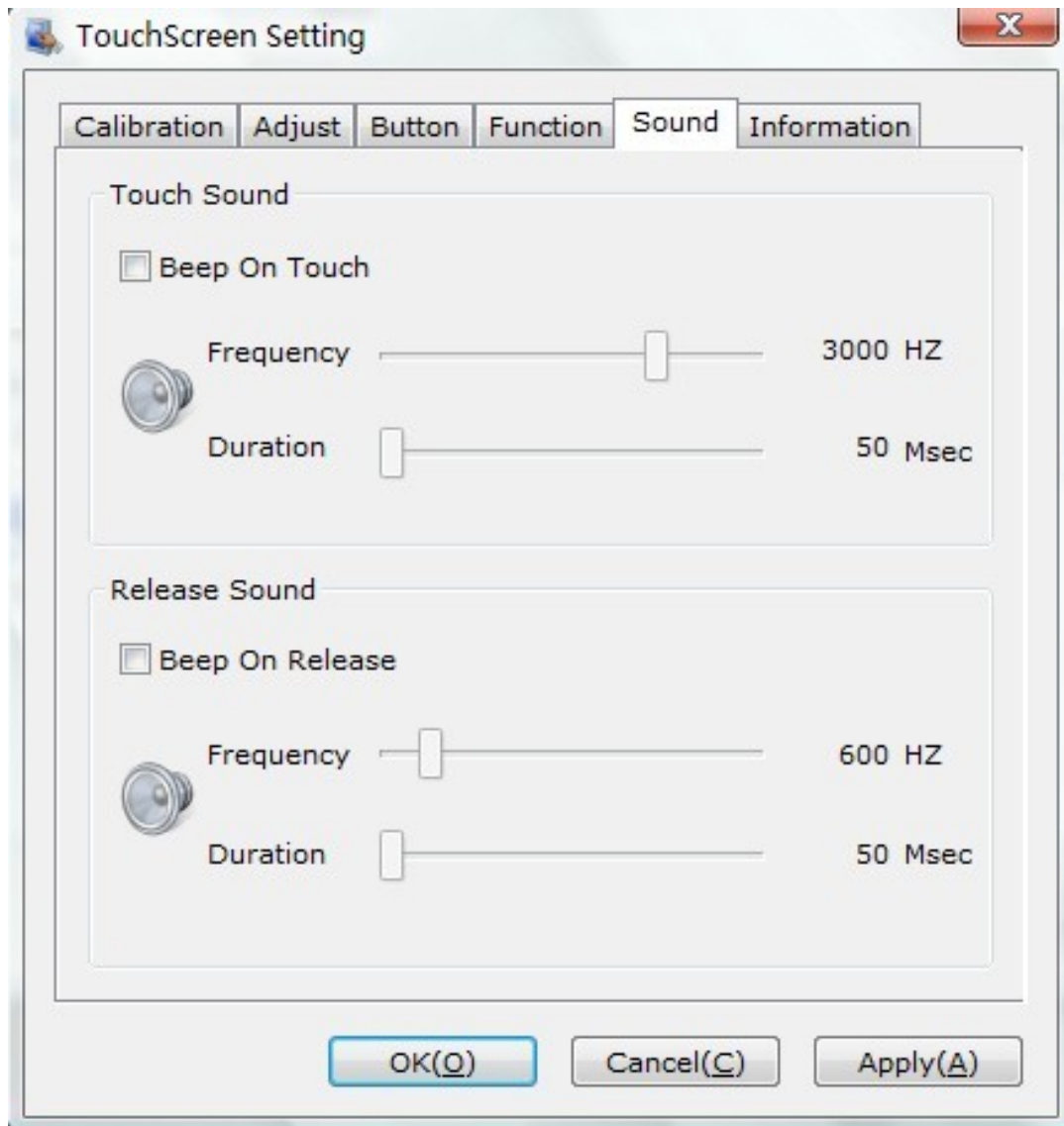
Range: Disconnected line in range of 20mm will be amended by algorithm

Time: Disconnected line in range of 100msec will be amended by algorithm

Enable Line Smooth Function: Line can be smoothed by algorithm to insert 5points in 15mm range

2.6 Touchscreen setting-Sound

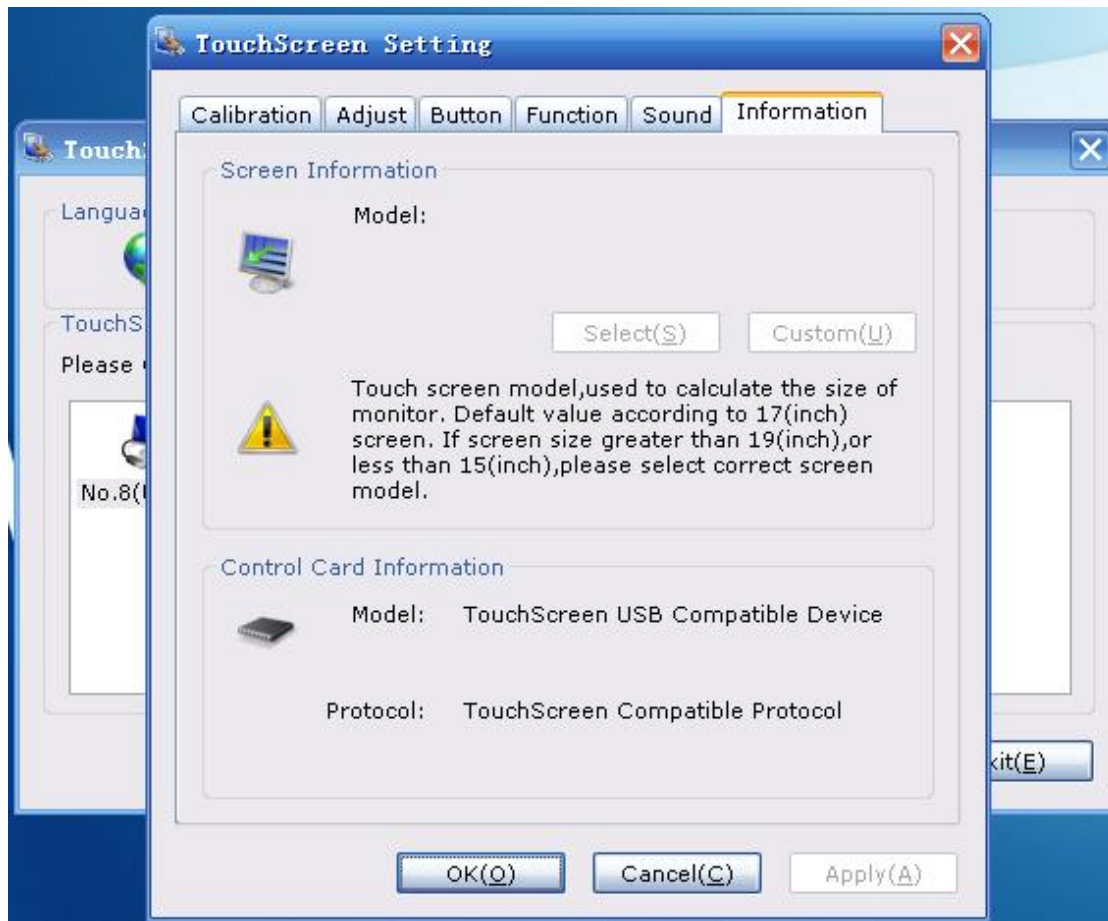




Beep on touch the speaker on the computer will generate voice when touch on the touchscreen

Beep on release the speaker on the computer will generate voice when leave off the touchscreen

2.7 Touchscreen setting-Information



[Control Card information]

Indicate Control Card information

4 Uninstall Leadingtouch drivers

Enter Touchscreen Uninstall program through the following programmer

1 Click "Start" ---- "programmer" ---- "Leadingtouch" ---- "Uninstall"



2 Open control panel and select "Leadingtouch Driver for Window" ---- "delete"



3. Run setup program and select “uninstall” .